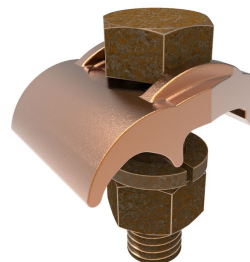


GBM29, Mechanical Grounding Connector, Cable to Bar

By Burndy
Catalog # [GBM29](#)

Mechanical Grounding Connector, Cable to 1/4" Thick Bar, 2/0 AWG (Sol) -250 kcmil, 1/2" Stud



Features

- High copper alloy ground connector for joining a range of cable to 1/4" thick bar
- Type GBM clamps cable directly on bar surface
- One-wrench installation
- UL467 Listed
- Suitable for Direct Burial in earth or concrete

Application

For Copper Cable To Bar, Direct Burial Cable

Specifications

Buy American Compliant	No
Certification - cULus	No
EU RoHS Indicator	Yes
Certification - UL Recognized	No
Industry Standard(s)	UL467
Certification - ETL	No
Standards - Industry Standards Met	UL467
Standards - RoHS Compliance Status	EX
Certification - CSA Approved	No
UL Listed	Yes
Certification - UL Listed Direct Burial	Yes

Conductor

Conductor - Copper Str Size	<ul style="list-style-type: none"> • 2/0 AWG • 3/0 AWG • 4/0 AWG
Conductor - Copper Solid Size	<ul style="list-style-type: none"> • 250 kcmil • 2/0 AWG • 3/0 AWG • 4/0 AWG
Conductor - Copper Solid Size Range	2/0 AWG - 250 KCMIL

Conductor - Copper Str Size Range	2/0 AWG - 250 kcmil
-----------------------------------	---------------------

Dimensions

Dimension - L Length Overall mm	32 mm
Dimension - Height inch	2.07 in
Dimension - Height mm	52.6 mm
Dimension - Width fraction	1-5/6 in
Dimension - Width inch	1.84 in
Dimension - Width mm	47 mm
Dimension - Length Overall inch	1.25 in

Force Related

Installation Torque Recommended in-lb	480 lb-in
---------------------------------------	-----------

General

Material Type - Screw	DURIUM™ Silicon Bronze
Sub Brand	MECHANICAL CONNECTOR
Physical Attribute - Screw Type Plated	Hexagonal Bolt N
Type	GBM
UPC 12 Digit	781810231456
UPC 14 Digit GTIN	00781810231456
Material	Copper Alloy
Plating Type	Unplated
UPC	781810231456

Logistics

Minimum Pack Quantity	1
Carton Quantity	75
Pallet Quantity	3825

Product Assets

[Catalog \[English\]](#)